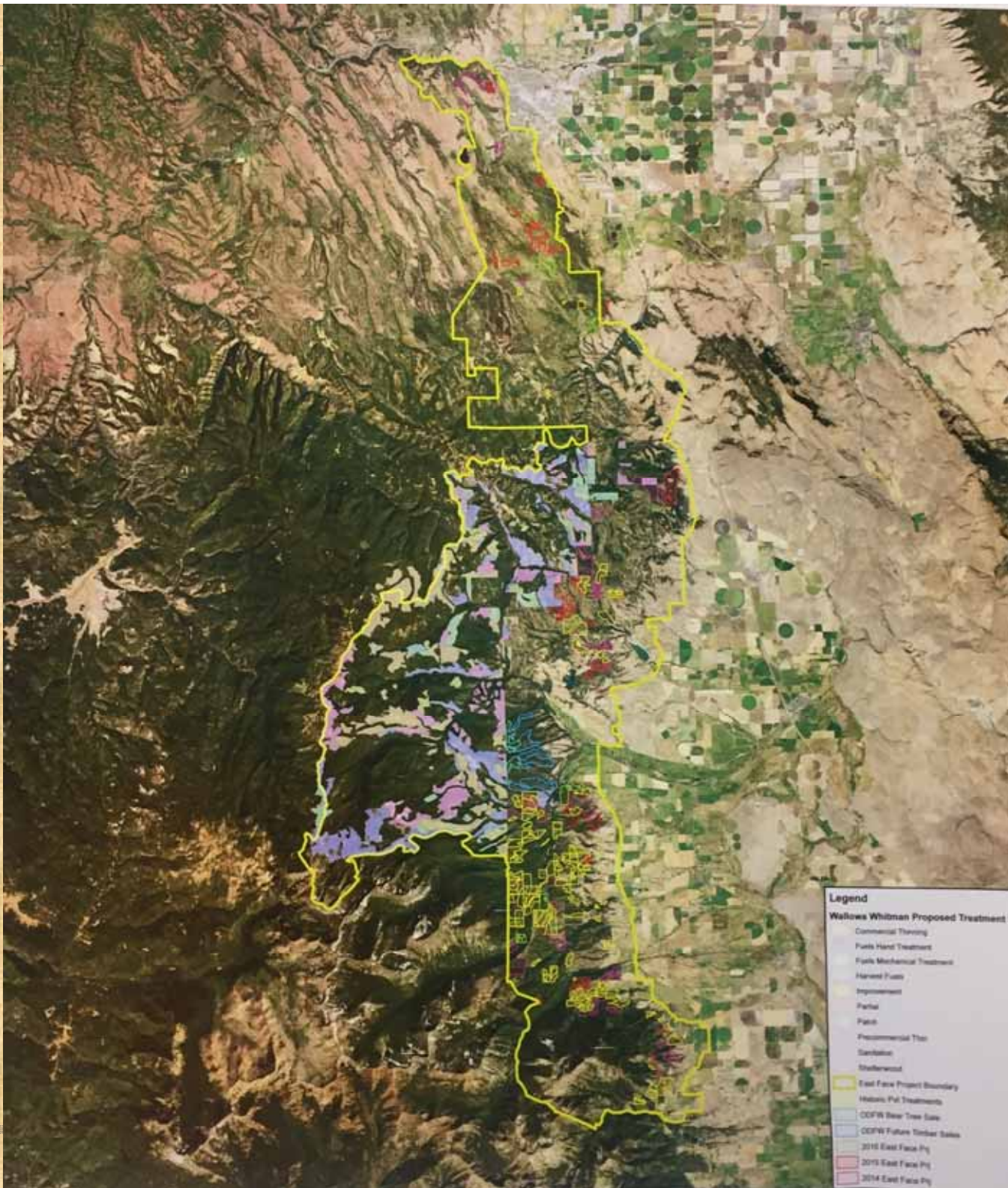

EAST FACE

Collaborative Workshop
May 2, 2017



- Legend**
- Willows Whitman Proposed Treatment U**
- Commercial Thinning
 - Fuels Hand Treatment
 - Fuels Mechanical Treatment
 - Harvest Patch
 - Improvement
 - Partial
 - Patch
 - Precommercial Thin
 - Sanitation
 - Shallowwood
 - East Face Project Boundary
 - Historic Pul Treatments
 - ODFW Bear Tree Sale
 - ODFW Future Timber Sale
 - 2016 East Face Pq
 - 2019 East Face Pq
 - 2014 East Face Pq

PRIVATE LANDS

- 61 landowners
 - 5,556 total acres
 - 3,559 acres completed to date
 - \$2.3 million dollars contracted
 - \$1.5 million dollars paid to date
 - First year of contracting was 2014
 - Work should be done by 2019
-



May 2014

July 2016





October 2014

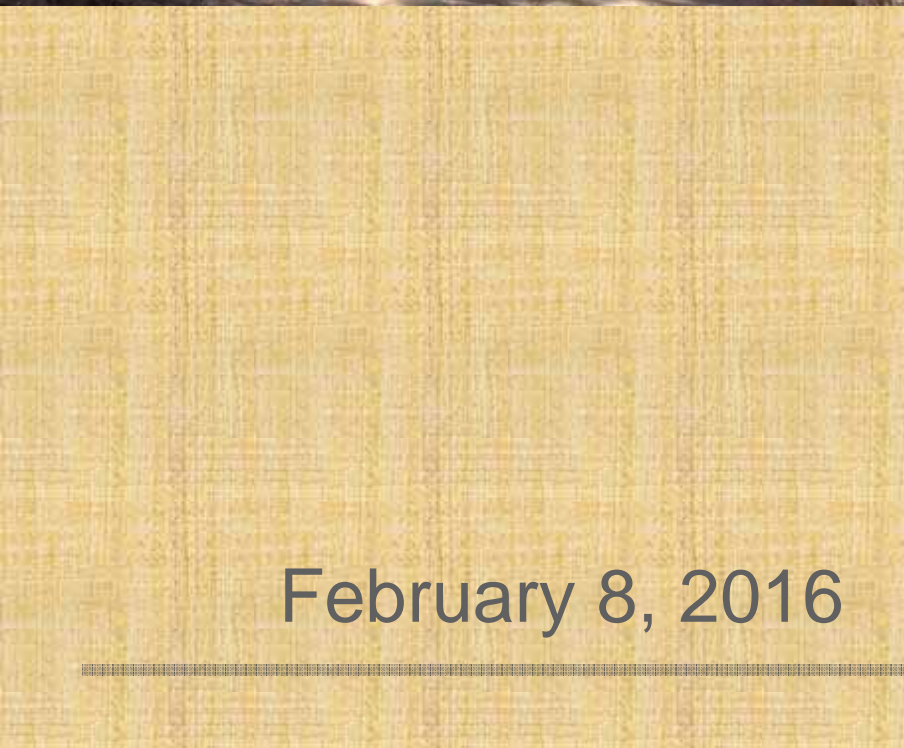


November 2015





February 8, 2015



February 8, 2016

