



Fish Habitat and Passage in Oregon Forests

Wildlife in
Managed
Forests



Fish, especially salmon and steelhead, are synonymous with Oregon. Protecting habitat for these iconic species is a fundamental part of forest ownership.



**Wildlife in
Managed
Forests**



Introduction

Fish in Oregon Forests

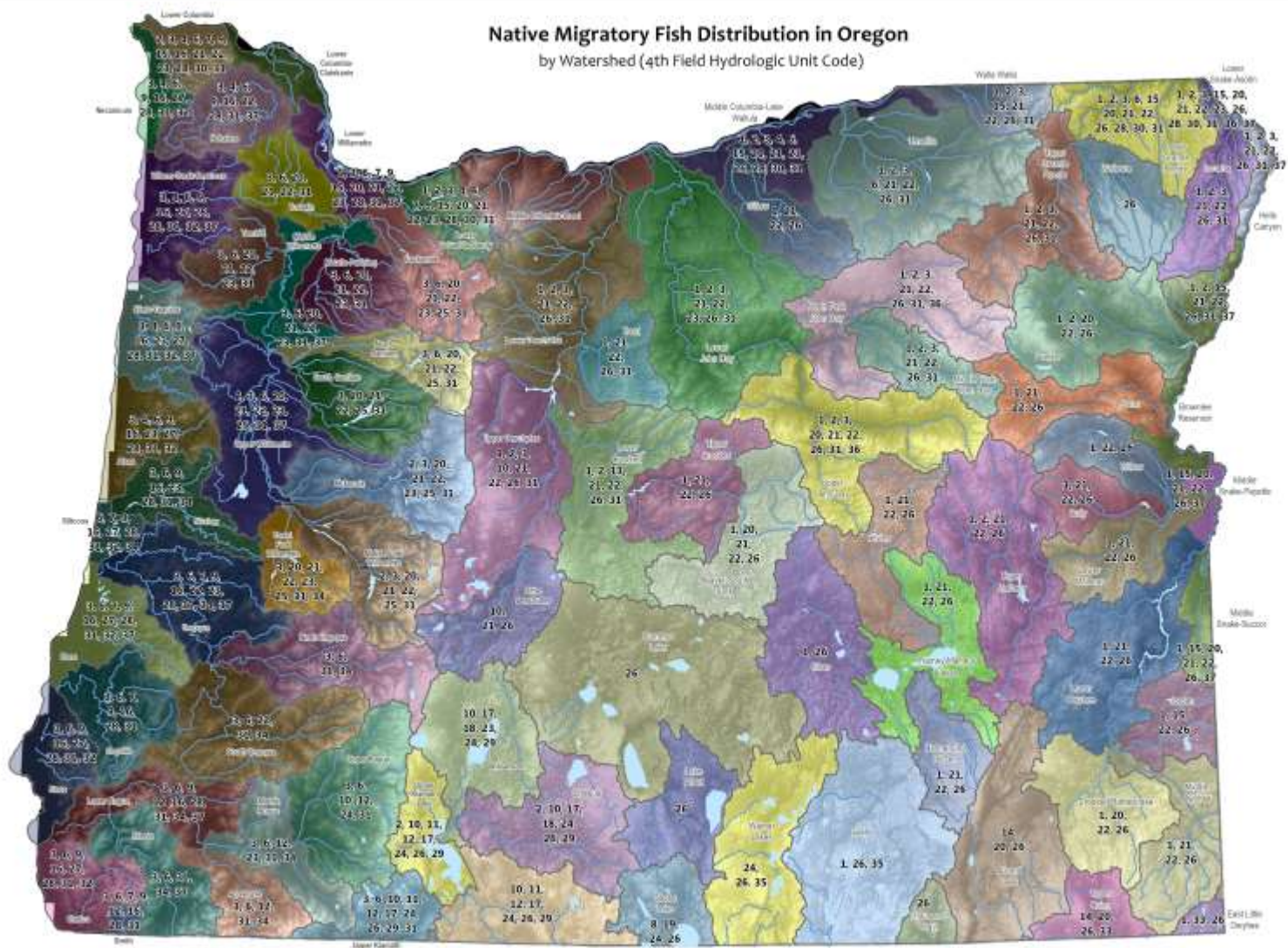


**Wildlife in
Managed
Forests**



Fish in Oregon

Native Migratory Fish Distribution in Oregon
by Watershed (4th Field Hydrologic Unit Code)



Species Key	
Number	Species (common name)
1	Bridgelip sucker
2	Bull trout
3	Chinook salmon
4	Chum salmon
5	Coastal cutthroat trout
6	Coho salmon
7	Eulachon
8	Gooselake sucker
9	Green sturgeon
10	Klamath largescale sucker
11	Klamath River lamprey
12	Klamath smallscale sucker
13	Kokanee salmon
14	Lehonton cutthroat trout
15	Largescale sucker
16	Longfin smelt
17	Lost River sucker
18	Miller Lake lamprey
19	Modoc sucker
20	Mountain sucker
21	Mountain whitefish
22	Northern pikeminnow
23	Pacific lamprey
24	Pit Klamath lamprey
25	Rainbow trout
26	Redband trout
27	Redtail surfperch
28	River lamprey
29	Shorthose sucker
30	Sockeye salmon
31	Steelhead trout
32	Surf smelt
33	Tahoe sucker
34	Umpqua pikeminnow
35	Werner sucker
36	West slope cutthroat trout
37	White sturgeon

DISCLAIMER: This map displays the distribution of native migratory fish covered under the Oregon Department of Fish and Wildlife's fish passage authority, as defined by OAR 635-412-0025 (32). This map should be used for information purposes only and is not designed to replace conversations and consultations with district fish biologists. To ascertain the fish distribution in your area, please contact an ODFW fish biologist: <http://www.odfw.state.or.us/fish>



Wildlife in Managed Forests



Fish Distribution



**Oregon Forest
Resources Institute**

What Makes Good Fish Habitat?

- Clean
- Cold
- Connected
- Complex



Wildlife in
Managed
Forests



Fish Habitat

What is Fish Passage?

- Anadromous
- Native migratory
- Barriers
- Triggers



Wildlife in
Managed
Forests



Fish Passage

Advice for Planning Fish Habitat Projects

- Assessment
- Connections
- Sharing
- Road placement
- Tree Species



Wildlife in
Managed
Forests



Advice

Improving Fish Habitat and Passage

- Plant diverse tree species in riparian areas
- Maintain conifer and hardwoods



Wildlife in
Managed
Forests



Improving fish
habitat and passage

Improving Fish Habitat and Passage

- In-stream habitat
- 4 C's
- Log Sizes



Bankfull Width, in Feet	Minimum Diameter Log, in Inches
0 – 10	10
10 – 20	16
20 – 32	18
Over 32	22
ODFW 2010	

Wildlife in
Managed
Forests



Improving fish
habitat and passage

Improving Fish Habitat and Passage

- Roads
- Culverts



**Wildlife in
Managed
Forests**



**Improving fish
habitat and passage**

Case Study

- Seely Creek



Wildlife in
Managed
Forests



Weyerhaeuser
Company Case
Study

Forest Industry and Fish Habitat and Passage

- Nearly **\$100 million** toward restoration activities that benefit fish passage and habitat in Oregon Forests



Wildlife in
Managed
Forests



Forest Industry and
Fish Habitat and
Passage

Forest Industry and Fish Habitat and Passage

Statewide Summary of Forestry Accomplishments on Private Forestlands (1997 – 2011)

Oregon Plan Actions Reported from 1997 to 2011 by Private Forest Landowners

	Total
Road Miles Surveyed	16,458
Road Miles Improved	3,289
Road Miles Vacated, Closed, ore Relocated	550
Number of Peak Flow Improvements (increase culvert or bridge size to pass high stream flows)	7,981
Number of Surface Drainage Improvements	18,505
Number of Stream Crossings Improved for Fish Passage	1,749
Number of Large-wood Placement Projects	569
Number of Other In-Stream Projects (boulder placements, side channels, and alcoves)	168
Number of Riparian Management Projects (voluntary tree retention)	2,651

Based on projects completed and reported to the Oregon Watershed Restoration Inventory. Table prepared by Bobbi Riggers, OWRI coordinator, July 2013.

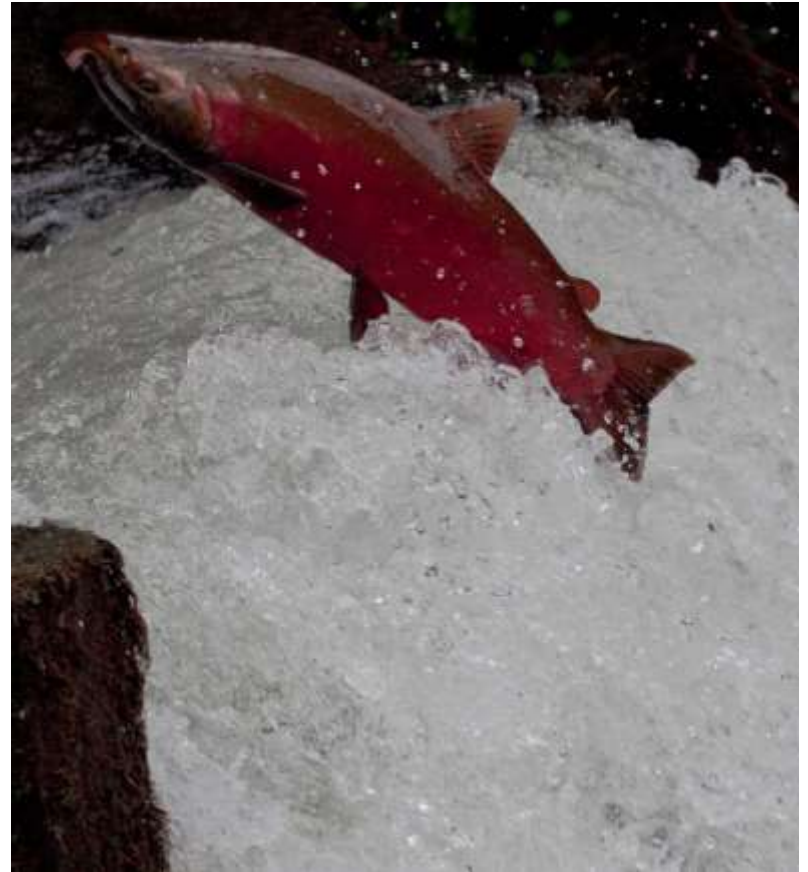
Wildlife in
Managed
Forests



Forest Industry and
Fish Habitat and
Passage

Summary

- Keep your forest working
- Reduce roads near streams
- Design crossings perpendicular
- Manage sediment
- Remove Barriers



Summary

Working forests provide quality fish habitat and are always working to provide improved fish passage for fish in Oregon Forested Habitats.



**Wildlife in
Managed
Forests**



Summary