

Oregon Tree Farm System, Inc.

**Oregon Tree Farm
Memorial Fund**

November 21, 2016

**By Dick Courter, ACF, CF
Founder**

**TREE FARMER OF THE YEAR
RECOGNITION LUNCHEON**

OREGON TREE FARM MEMORIAL FUND

Founded 1996

OTFS, Inc. Board

Adopted Resolution

January 21, 1998



OREGON TREE FARM MEMORIAL FUND

PURPOSE

To establish a long term income generating fund for the purpose of operating Oregon Tree Farm Programs



OREGON TREE FARM MEMORIAL FUND

Brief History Discussion

First Recorded Donation - 1996



OREGON TREE FARM MEMORIAL FUND

Donation Types

Memorials

Honorariums

Special Gifts



OREGON TREE FARM MEMORIAL FUND

Donation Sources

Cash Donations

Will Bequests Consisting of:

Real Property or Cash

Investment Securities

Listing the “FUND” as beneficiary to Life or other

Insurance Policies



OREGON TREE FARM MEMORIAL FUND

ESTATE & SUCCESSION PLANNING TOOLS

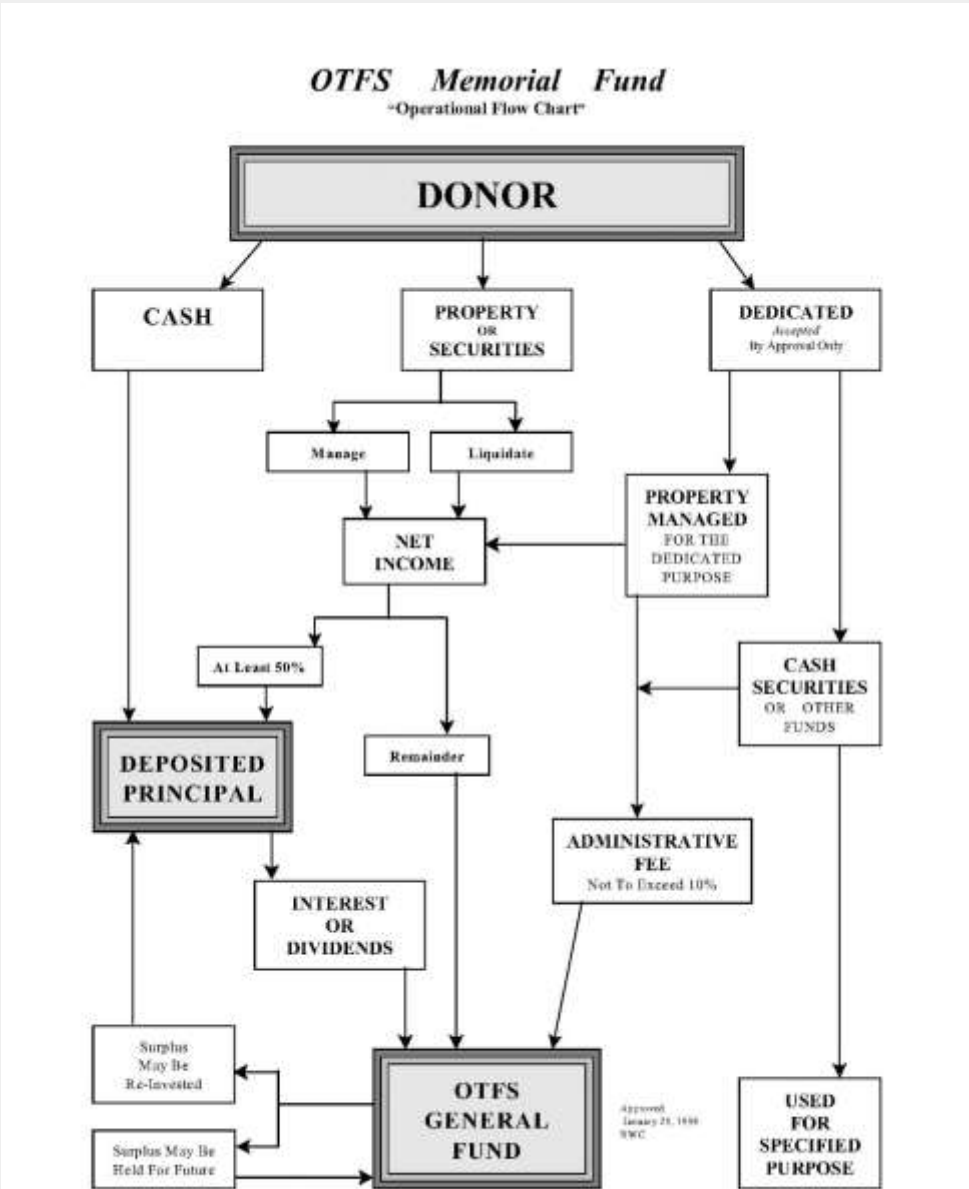
Charitable Remainder Trusts

Charitable Lead Trusts

**Any Other Planning Tool Available that could
name the “FUND” as beneficiary**



OREGON TREE FARM MEMORIAL FUND



OREGON TREE FARM MEMORIAL FUND

DONATED PRINCIPAL INVESTED

Donations Since Inception **\$ 72,605.99**

Market Value at November 15, 2016 **\$ 78,111.19**

*Only dividends, interest and market gain
can be removed from fund to support
Oregon Tree Farm System, Inc.*



OREGON TREE FARM MEMORIAL FUND

Investment Gain Withdrawn

Since Fund Inception

\$ 16,100.00



OREGON TREE FARM MEMORIAL FUND

PLEASE CONSIDER DONATING

Donation Envelops are on Tables

Donations can be cash, property or securities to

Establish Memorials

Establish Honorariums

Establish Special Gifts

