

# East Face Elkhorn Mountains Joint Chiefs Restoration Project

Leveraging Partnerships to Enhance Landscape and Community Resiliency

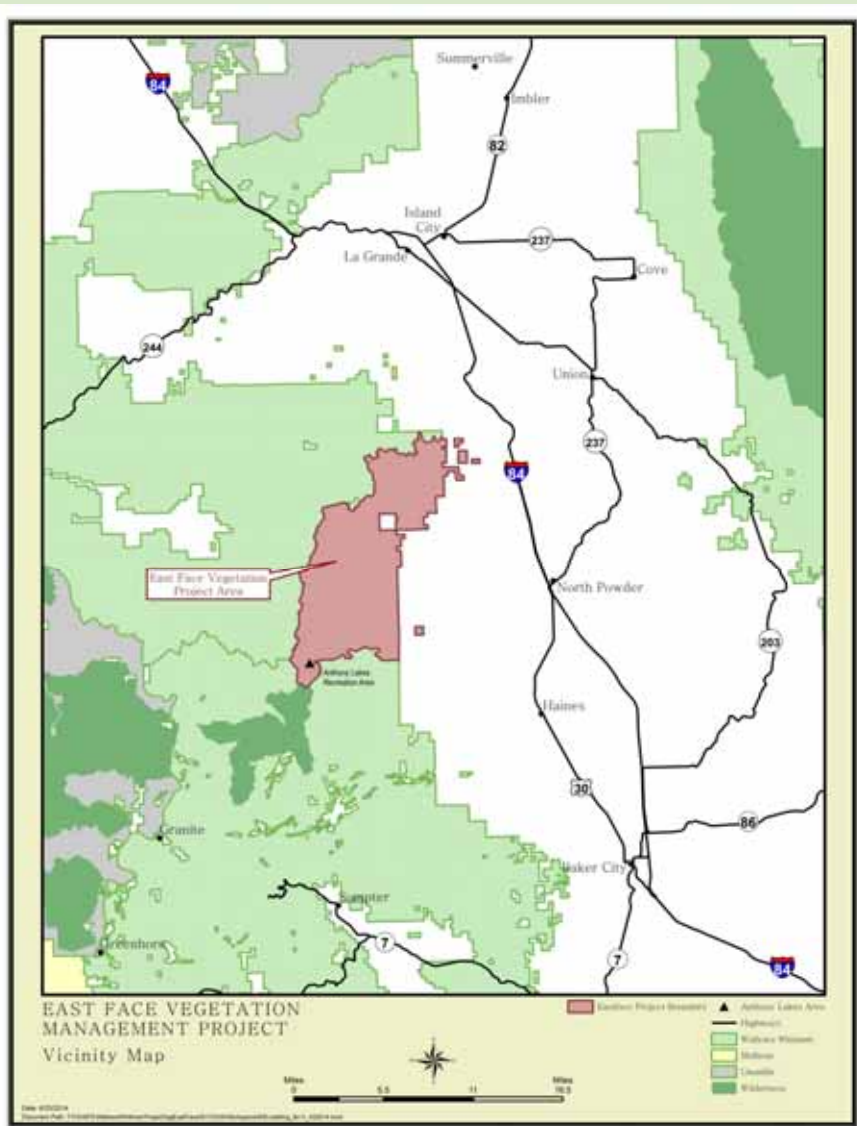
Bill Gamble – La Grande District Ranger, USDA Forest Service



**for the greatest good**



**Wallowa-Whitman National Forest**

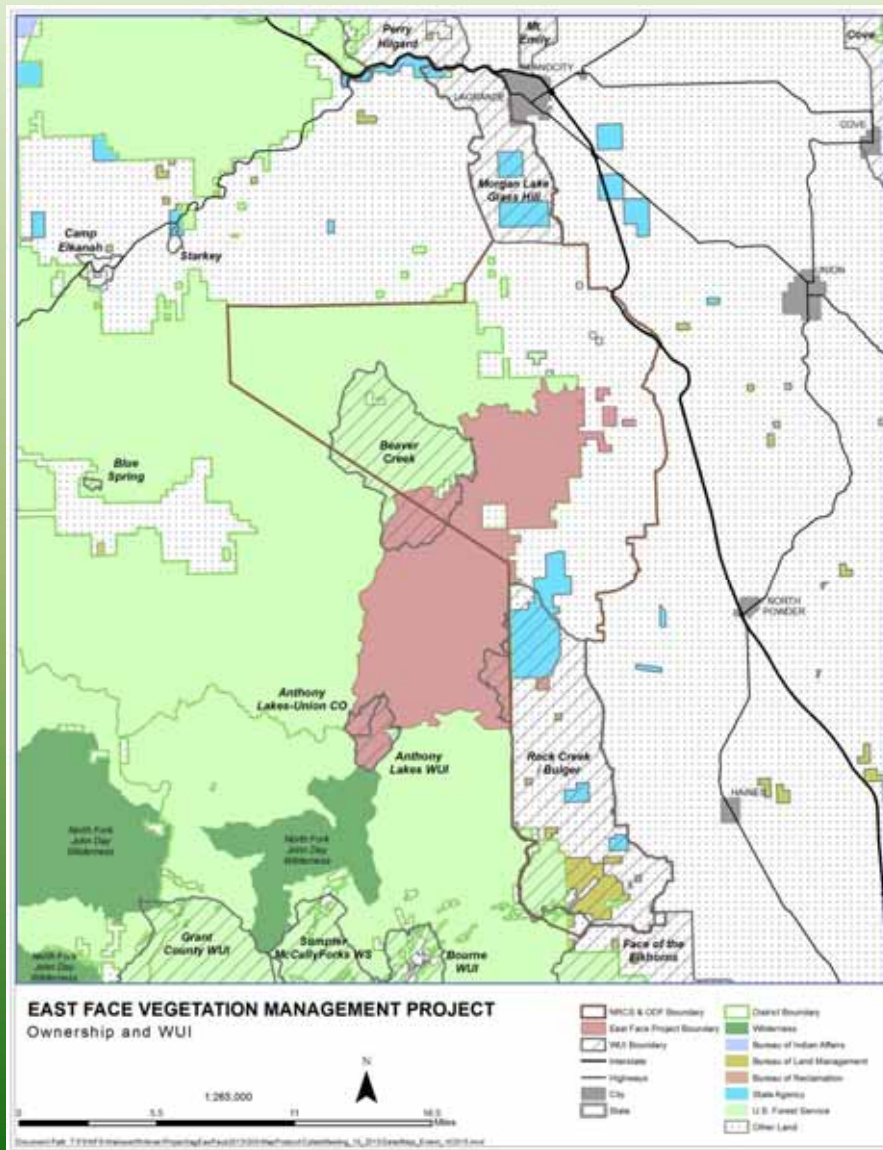


In the beginning.....

- Relatively “typical” public land planning project
- Incorporated adjacent BLM parcels

And then.....

- NE Oregon/SE Washington selected as Cohesive Wildfire Strategy Pilot Area
- Joint Chiefs Restoration Partnership established
- Wallowa-Whitman Forest Collaborative



- 4 Wildland Urban Interface (WUI) Areas
- **20+ miles of shared boundary with private lands**
- La Grande Municipal Watershed – Beaver Creek
- Anthony Lakes Recreation Area
- State Designated Elkhorn Scenic Byway (73 road)
- Recreation Residences
- **Important agriculture water source**
- **Forest management investments on private and public forest lands**



# Robust Fire History

**Robust Fire History**

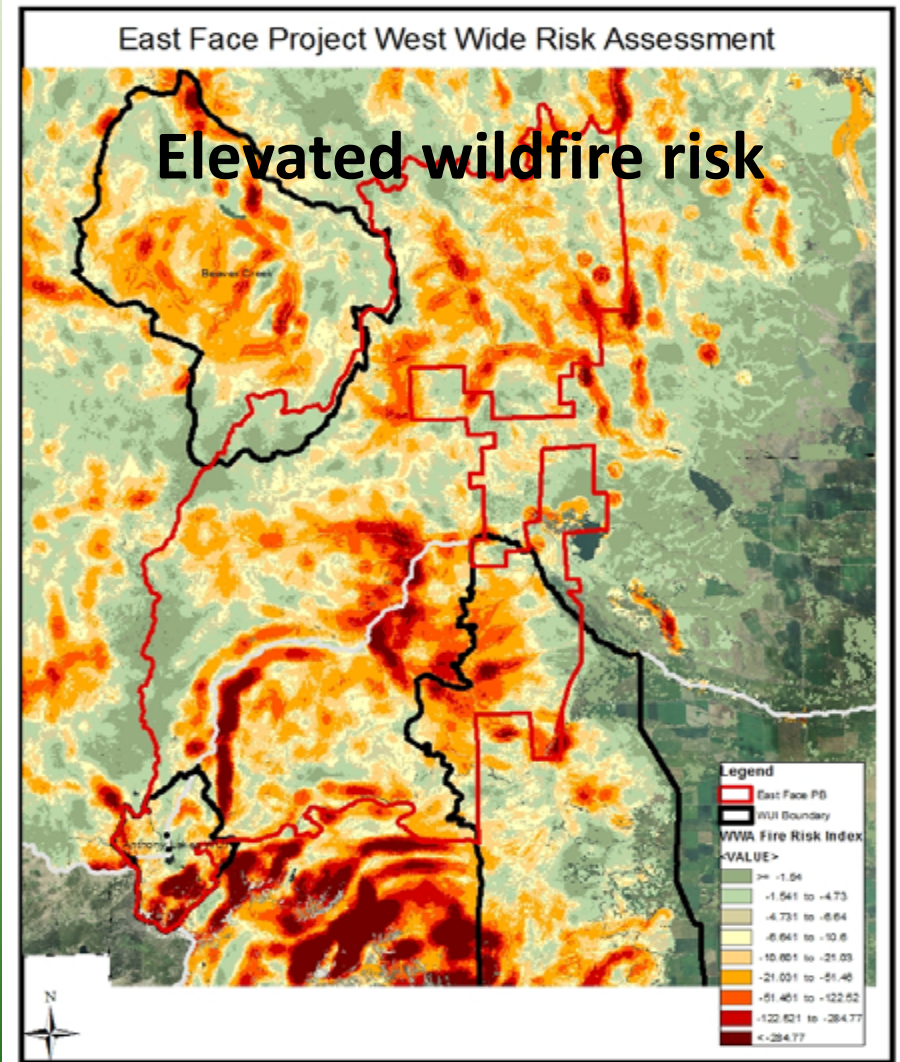
**EAST FACE PLANNING BOUNDARY**  
*Past Fires Map*

**Legend:**

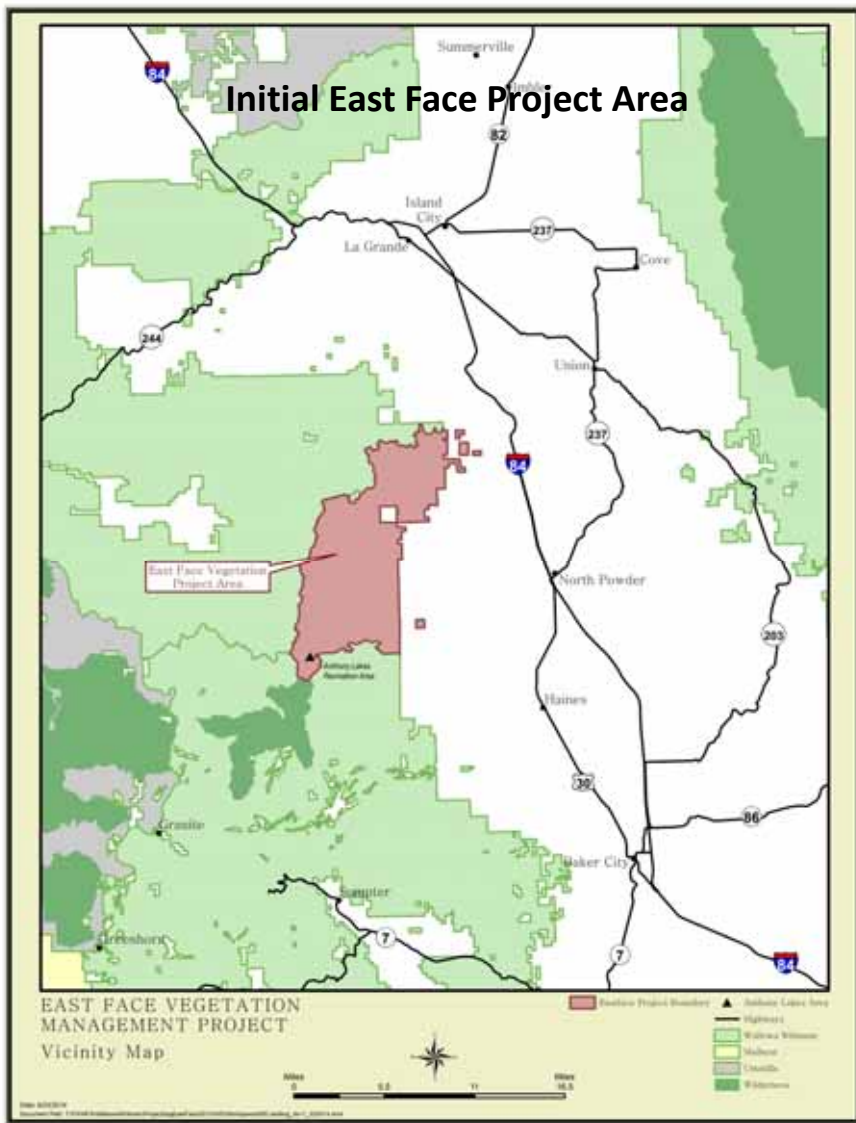
- Fire History Zones:**
  - Zone 1: High fire frequency, high severity
  - Zone 2: High fire frequency, low severity
  - Zone 3: Low fire frequency, high severity
  - Zone 4: Low fire frequency, low severity
  - Zone 5: No fire history
- Other Features:**
  - Water bodies
  - Transportation routes
  - Land use
  - Topography

**Scale:** 0 to 10 miles

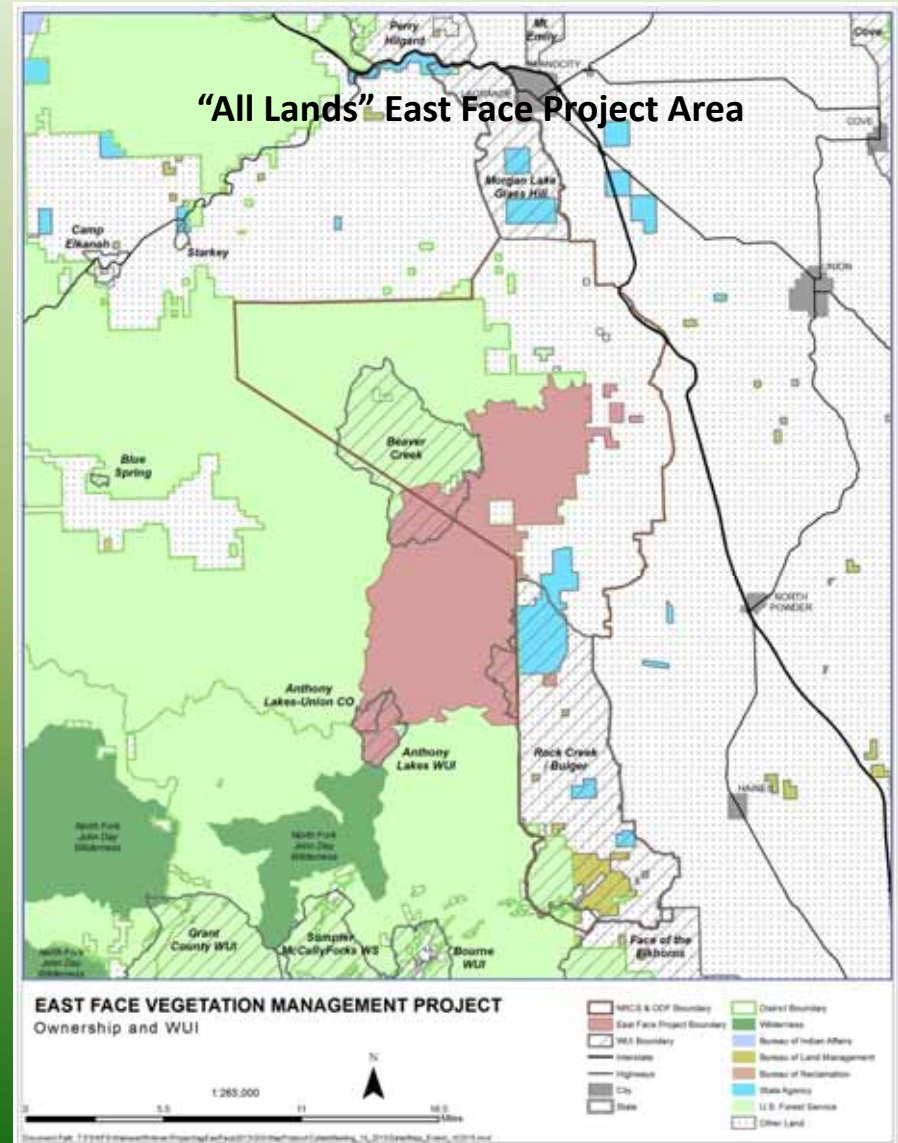
**North Arrow:** N



## Initial East Face Project Area

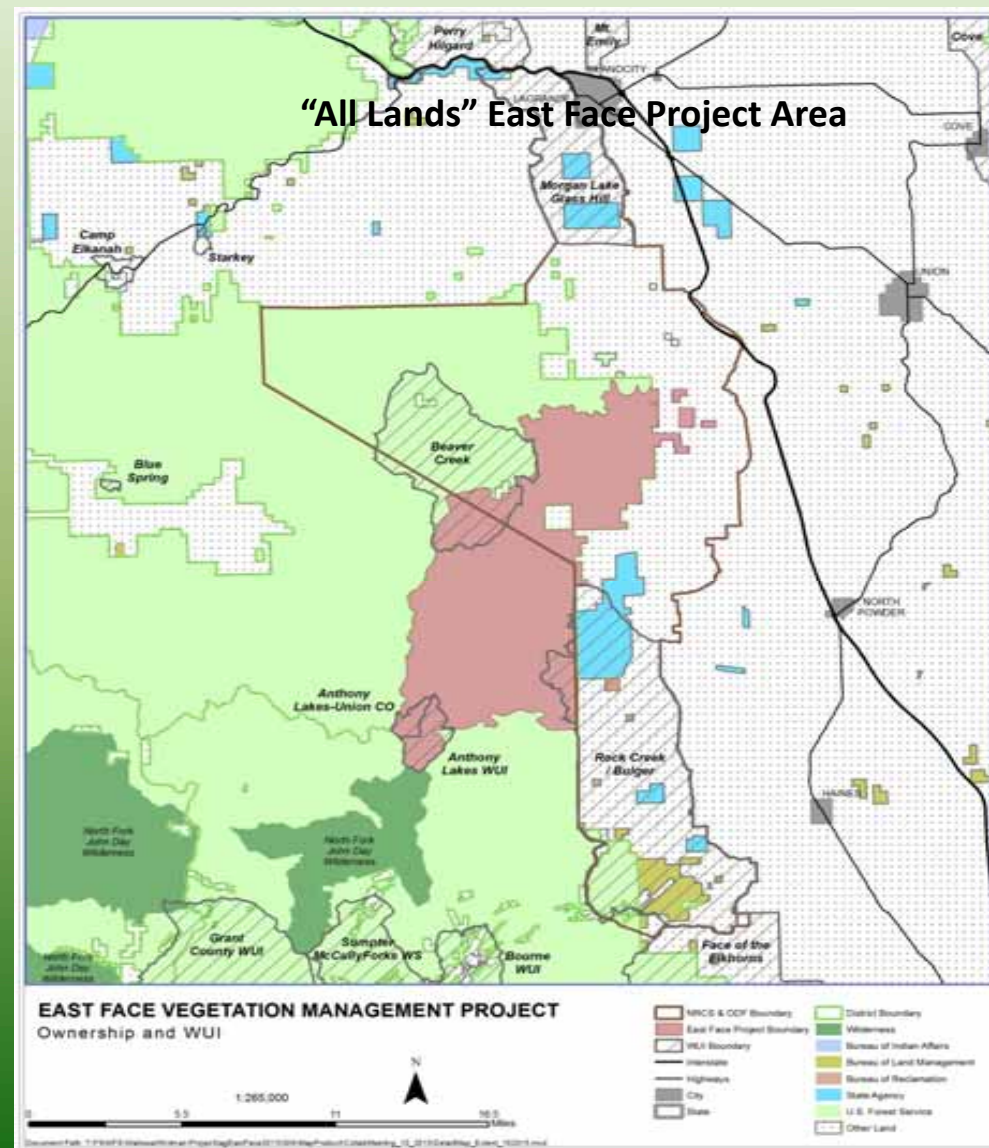
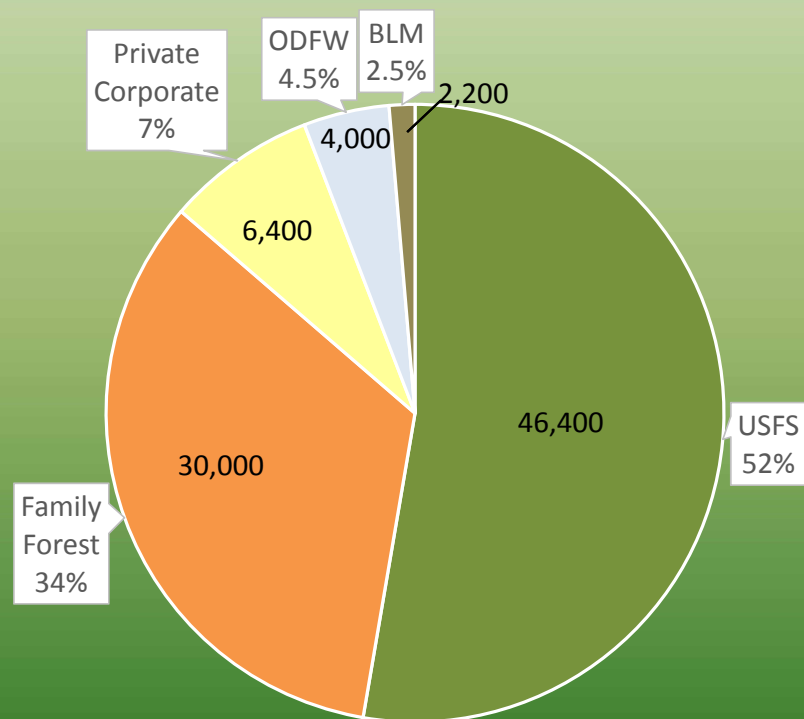


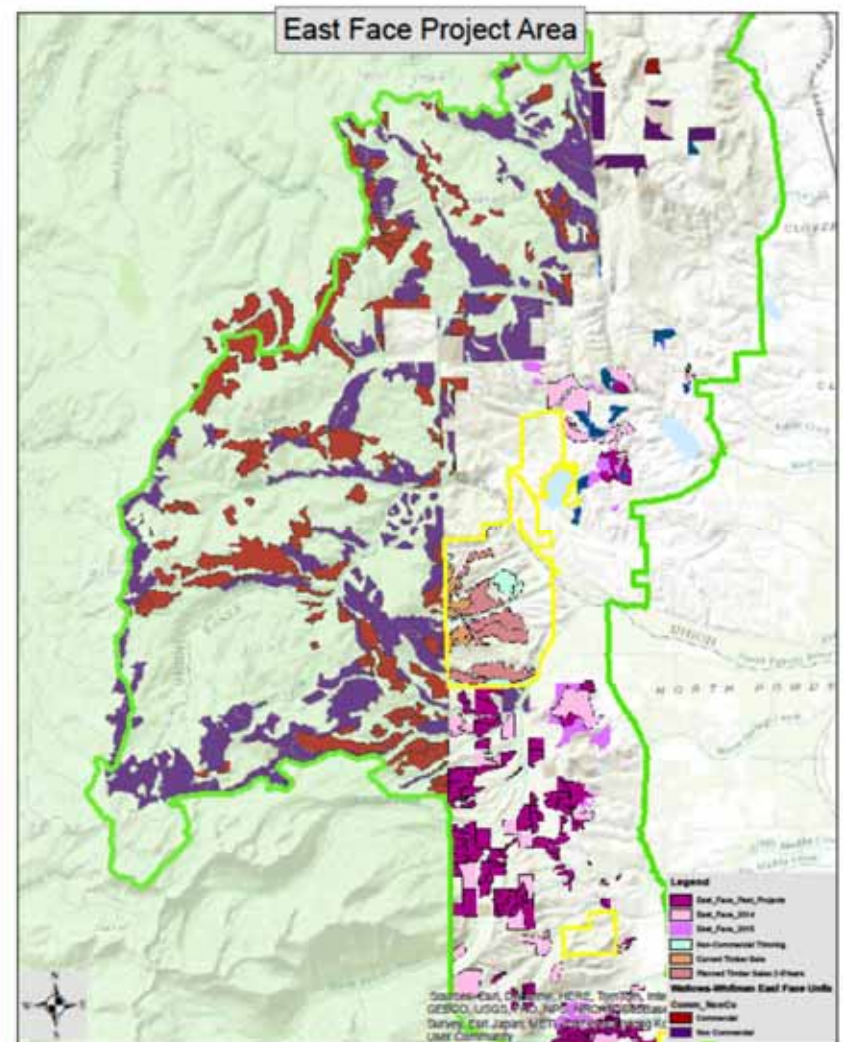
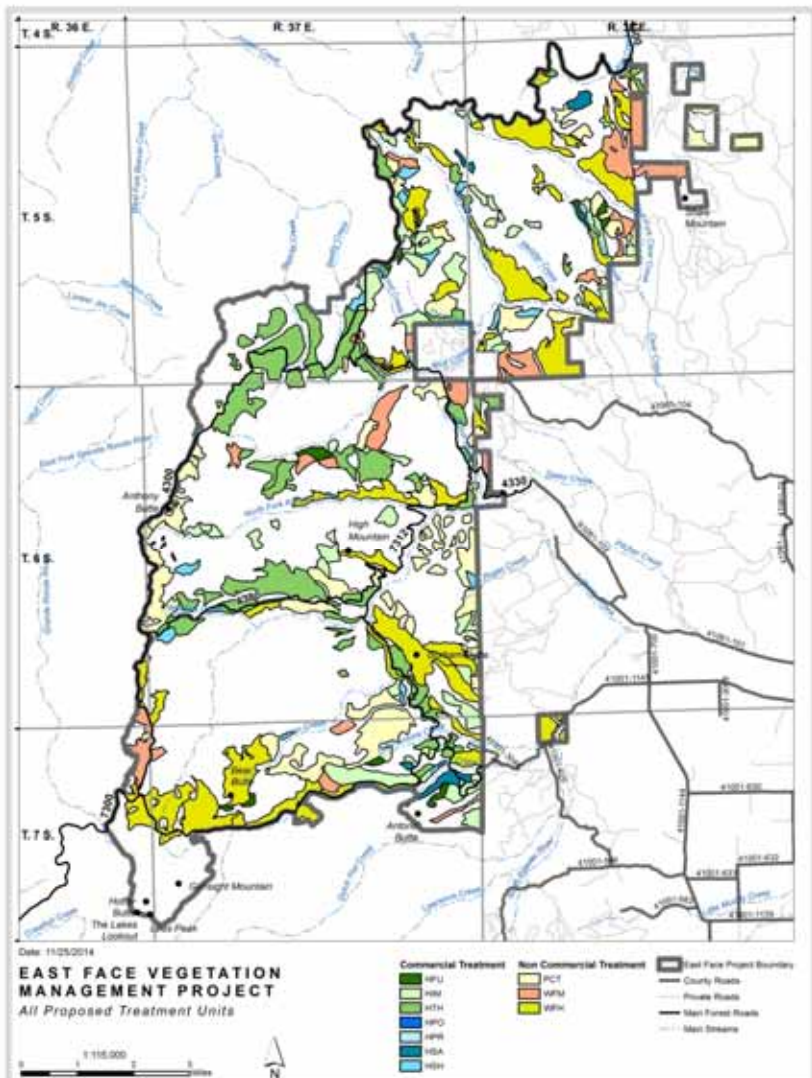
## "All Lands" East Face Project Area





## Landownership, acres





# East Face Project Accomplishments To Date

## Private forest lands:

- 5506 acres under contract
- 3,495 acres completed
- 61 landowner contracts to date
- \$2.3 million in Joint Chief funding

## State forest lands:

- 220 acres commercial harvest completed
- Additional commercial sales being laid out/planned
- \$138,000 in federal funds (State and Private Forest)

## National forest lands:

- 9842 acres under contract
- ~3000 acres completed
- First 2 timber sales ready for offer
- \$1.3 million in Joint Chief funding and \$1.4 million supplemental fuels funding
- >\$150,000 additional leveraged funding





**for the greatest good**



# My Blue Mountains Woodland



It's all about relationships.....





# Questions?

