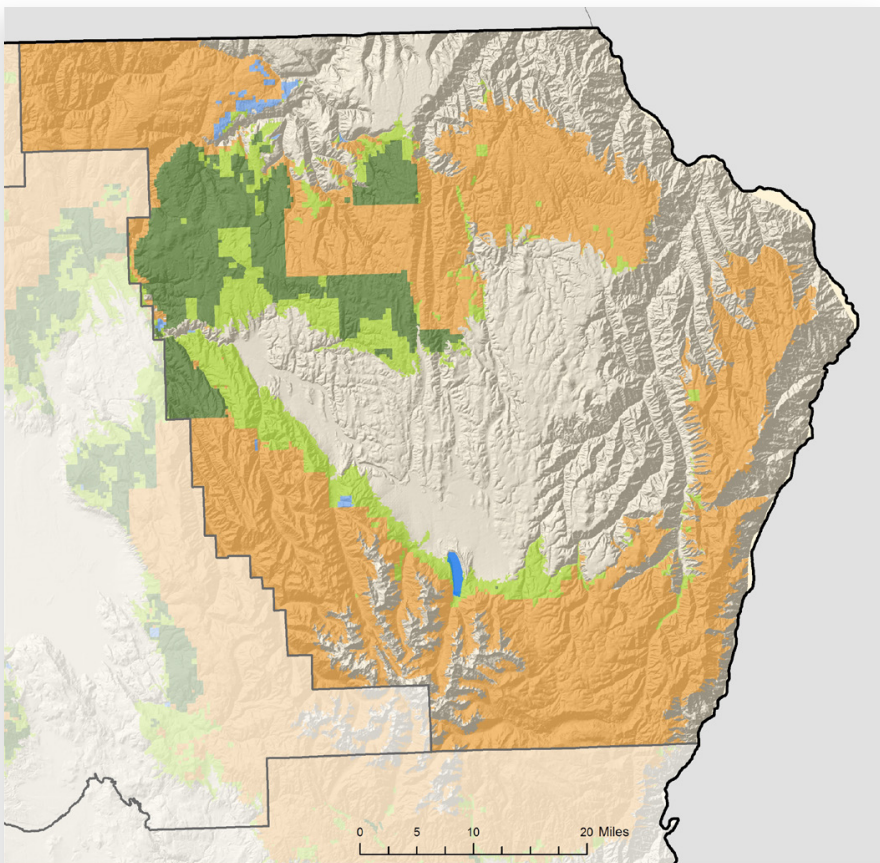


# WALLOWA COUNTY



## LAND AREA

(thousands of acres)

Total land	2,013
Total forestland (54%)	1,085

## FORESTLAND OWNERSHIP

(thousands of acres)

Federal	791
Large private	150
Small private	135
State and other public	9
Tribal	0

## TIMBER HARVEST

(thousands of board feet)

Federal	2,576
Large private	52,675
Small private	2,334
State and other public	0
Tribal	0
<b>TOTAL</b>	<b>57,585</b>

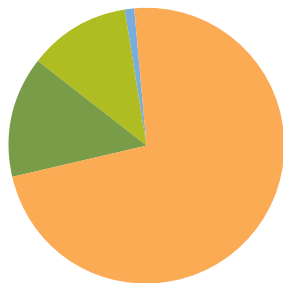
## FOREST SECTOR JOBS

Forest sector jobs	209
% of county employment	7.2
Economic base	\$21.5 million
% of county economic base	9.7

## PRIMARY WOOD PROCESSING

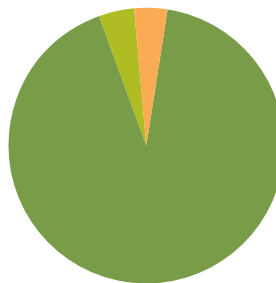
Sawmill	1
Plywood plant	0
Pulp and board plant	0
<b>TOTAL</b>	<b>1</b>

### FORESTLAND OWNERSHIP



73%	FEDERAL	4%
14%	LARGE PRIVATE	91%
12%	SMALL PRIVATE	4%
1%	STATE AND OTHER PUBLIC	0%
0%	TRIBAL	0%

### TIMBER HARVEST BY OWNER



2011