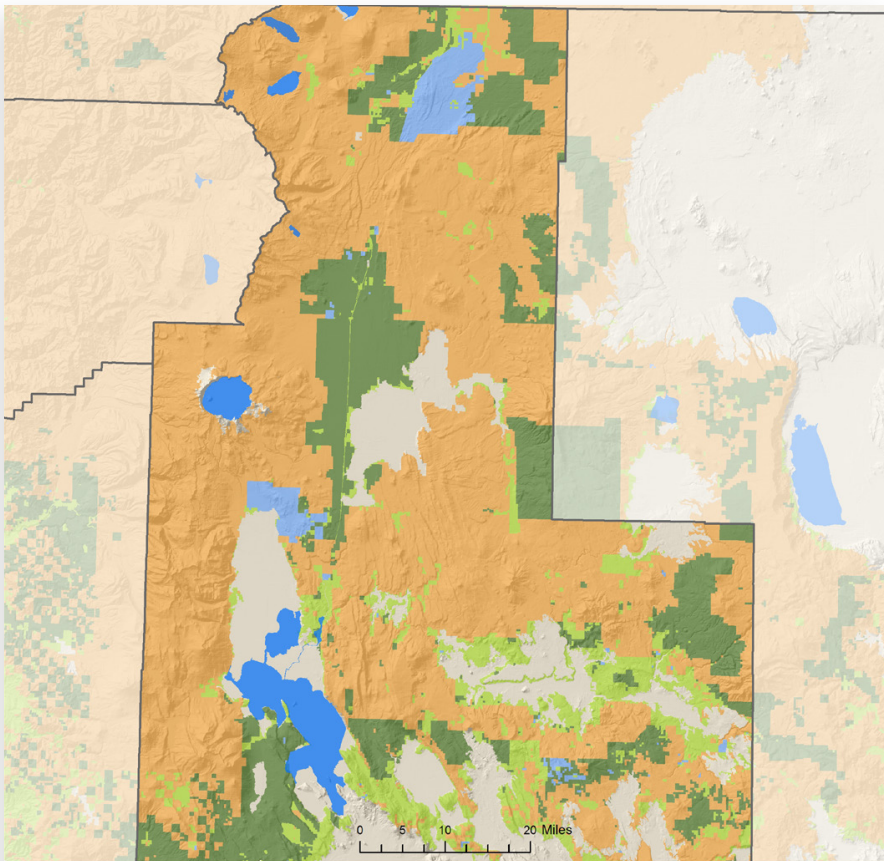


# KLAMATH COUNTY



## LAND AREA

(thousands of acres)

Total land	3,804
Total forestland (81%)	3,078

## FORESTLAND OWNERSHIP

(thousands of acres)

Federal	2,034
Large private	630
Small private	324
State and other public	90
Tribal	0

## TIMBER HARVEST

(thousands of board feet)

Federal	31,227
Large private	55,151
Small private	4,695
State and other public	15,650
Tribal	0
<b>TOTAL</b>	<b>106,723</b>

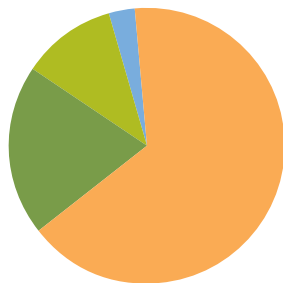
## FOREST SECTOR JOBS

Forest sector jobs	2,092
% of county employment	9.8
Economic base	\$492.7 million
% of county economic base	24.8

## PRIMARY WOOD PROCESSING

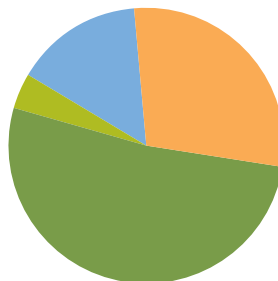
Sawmill	3
Plywood plant	1
Pulp and board plant	1
<b>TOTAL</b>	<b>5</b>

### FORESTLAND OWNERSHIP



66%	FEDERAL	29%
20%	LARGE PRIVATE	52%
11%	SMALL PRIVATE	4%
3%	STATE AND OTHER PUBLIC	15%
0%	TRIBAL	0%

### TIMBER HARVEST BY OWNER



2011