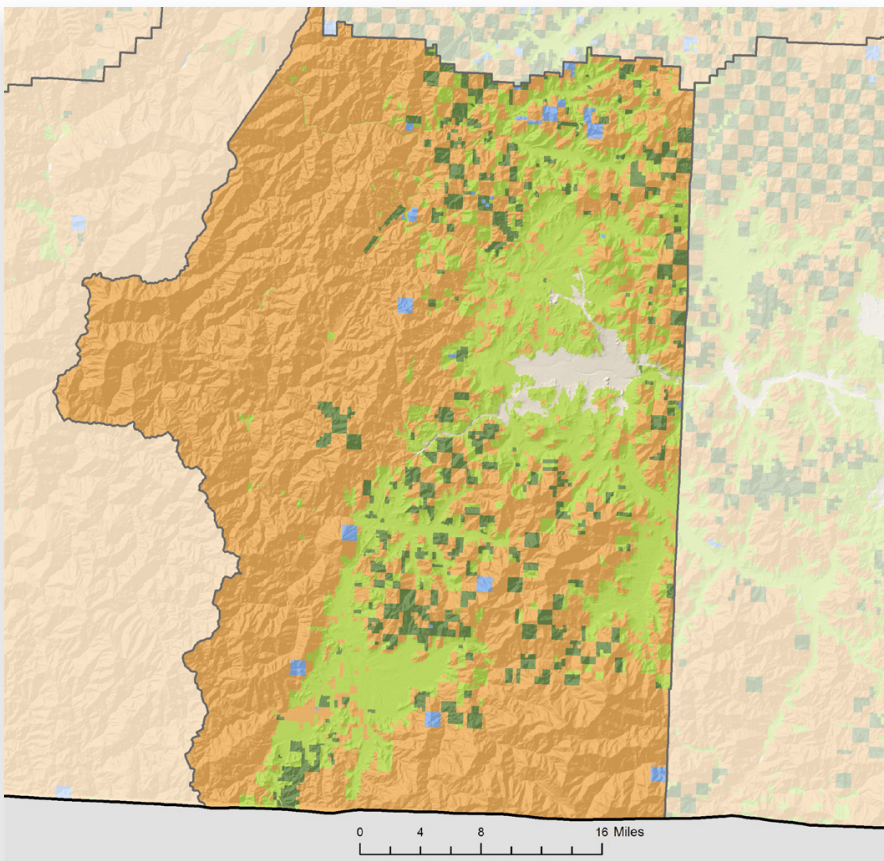
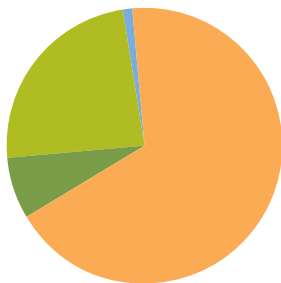


# JOSEPHINE COUNTY

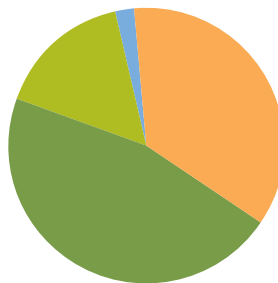


## FORESTLAND OWNERSHIP



|     |                        |     |
|-----|------------------------|-----|
| 68% | FEDERAL                | 36% |
| 7%  | LARGE PRIVATE          | 46% |
| 24% | SMALL PRIVATE          | 16% |
| 1%  | STATE AND OTHER PUBLIC | 2%  |
| 0%  | TRIBAL                 | 0%  |

## TIMBER HARVEST BY OWNER



2011

## LAND AREA

(thousands of acres)

|                        |       |
|------------------------|-------|
| Total land             | 1,049 |
| Total forestland (98%) | 1,031 |

## FORESTLAND OWNERSHIP

(thousands of acres)

|                        |     |
|------------------------|-----|
| Federal                | 706 |
| Large private          | 68  |
| Small private          | 250 |
| State and other public | 8   |
| Tribal                 | 0   |

## TIMBER HARVEST

(thousands of board feet)

|                        |               |
|------------------------|---------------|
| Federal                | 6,762         |
| Large private          | 8,622         |
| Small private          | 3,058         |
| State and other public | 458           |
| Tribal                 | 0             |
| <b>TOTAL</b>           | <b>18,900</b> |

## FOREST SECTOR JOBS

|                           |                 |
|---------------------------|-----------------|
| Forest sector jobs        | 1,409           |
| % of county employment    | 5.9             |
| Economic base             | \$159.3 million |
| % of county economic base | 7.5             |

## PRIMARY WOOD PROCESSING

|                      |          |
|----------------------|----------|
| Sawmill              | 1        |
| Plywood plant        | 0        |
| Pulp and board plant | 0        |
| <b>TOTAL</b>         | <b>1</b> |

