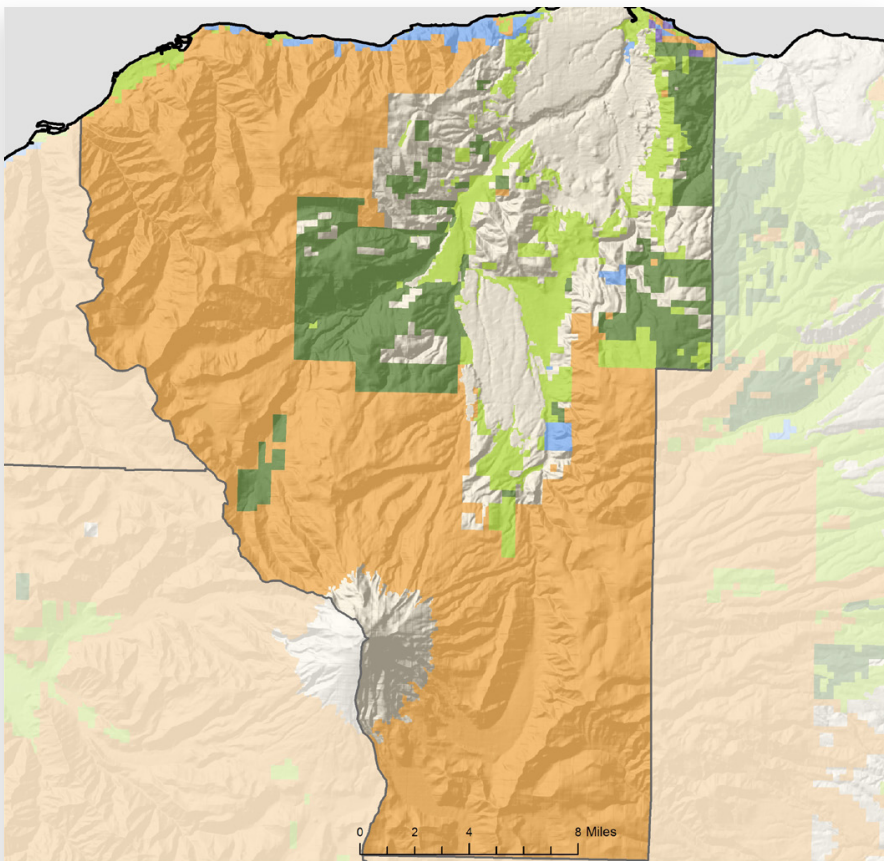


HOOD RIVER COUNTY



LAND AREA

(thousands of acres)

Total land	334
Total forestland (88%)	295

FORESTLAND OWNERSHIP

(thousands of acres)

Federal	200
Large private	35
Small private	24
State and other public	35
Tribal	0.3

TIMBER HARVEST

(thousands of board feet)

Federal	5,038
Large private	12,210
Small private	490
State and other public	9,963
Tribal	0
TOTAL	27,701

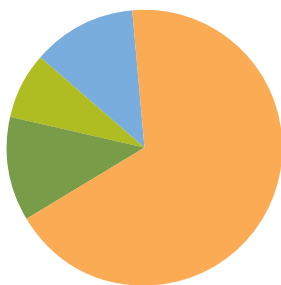
FOREST SECTOR JOBS

Forest sector jobs	483
% of county employment	4.7
Economic base	\$67.8 million
% of county economic base	6.8

PRIMARY WOOD PROCESSING

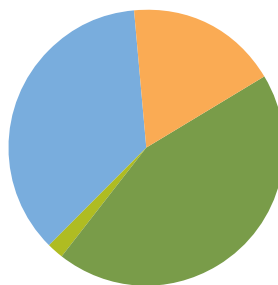
Sawmill	1
Plywood plant	0
Pulp and board plant	0
TOTAL	1

FORESTLAND OWNERSHIP



68%	FEDERAL	18%
12%	LARGE PRIVATE	44%
8%	SMALL PRIVATE	2%
12%	STATE AND OTHER PUBLIC	36%
0%	TRIBAL	0%

TIMBER HARVEST BY OWNER



2011