

Forestry and Wildlife Professionals Working Collaboratively for Carnivore Conservation

Wildlife in Managed Forests: Forest Carnivores and their Habitats:
A Focus on Fisher, Marten and Fox
Sponsored by Oregon Forest Resources Institute

October 19, 2017





© Michael Durham | Durmphoto.com



T. Hiller



“Conservation will ultimately boil down to rewarding the private landowner who conserves the public interest”

- Aldo Leopold

FWS Forest Management Priorities:

- Conserve listed species
- Keep species *off* the ESA list
- Promote science-based active management to:
 - reduce wildfire risk
 - improve forest health
 - provide jobs
 - create habitat conditions that support carnivores
- Collaborate with landowners, timber industry and local communities

Collaborative Conservation

- Proactive conservation requires investments.
- Encourages adaptive management.
- Can be cost effective in the long-term by reducing costs related to enforcement and litigation.
- Placed-based; local ownership, locally driven.

Main Challenges to Success:

- The **Science**
 - Is there enough knowledge to take action?
- **Trust** – areas where public has doubts.
- Competing Social **Values**
 - Tradeoffs (social, legal, biological, economic)?

Current Situation:

Fisher, Marten, Sierra Nevada Red Fox

- Restricted range
- Low density
- Many unknowns





Fisher Ecology

- **Multiple den and rest cavities**
 - From older (80+ year old) trees
- **Diversity of plant and trees** (not a park-like forest), and
- **Connectivity of forest stands** to avoid predation





Fisher - Litigation

- 2016 issued withdrawal of listing.
- June 2016 NOI filed by CBD, EPIC, KS Wild, et al.

NOI Claims:

Decision not based solely on best available data & ESA violations.

- May 2018 hearing scheduled.
- Timber industry filed as intervenors.



Marten Ecology

- Mature forest stands
- Large trees and snags for resting and denning
- Dense shrub layer





Marten - Litigation

- September 2010 EPIC filed petition for listing.
- April 2015 12-month finding: listing not warranted.
- Dec. 2015 CBD & EPIC filed suit. AFRC intervenor.

Claims:

Conclusions not supported/contrary to species report.
SPR policy is contrary to ESA.

- 2017 Court decision; ruled for plaintiffs.
- Oct 2018 complete re-analysis of finding.



Sierra Nevada Red Fox - Ecology

- Snowy, high elevation habitats
- Meadows and rocky areas





Sierra Nevada Red Fox - Decision

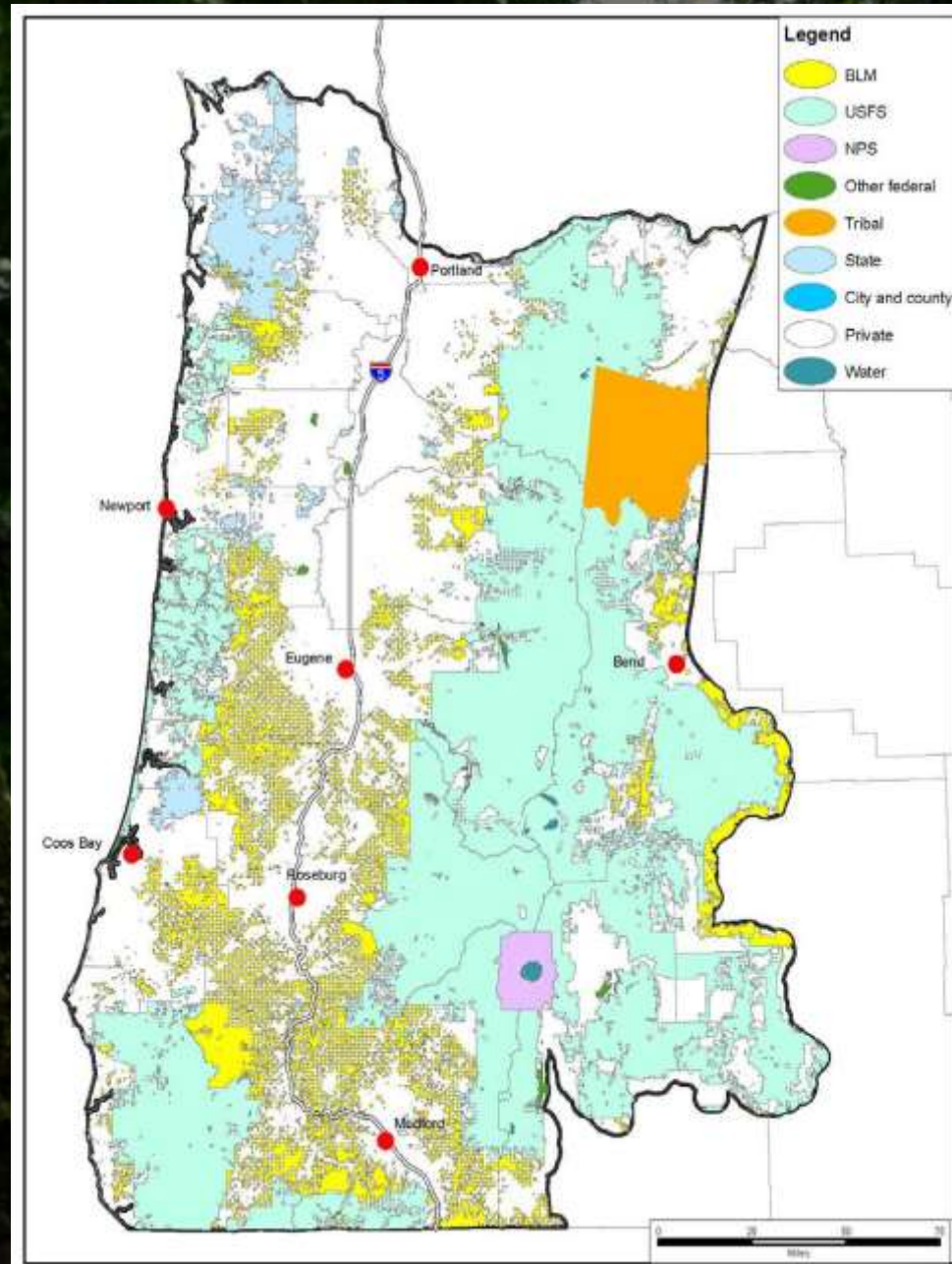
- April 2011 received petition to list from CBD.
- January 2012 published 90-day finding.
- August 2015 published Not Warranted finding for Oregon.



Role of Private Lands Collaborative Opportunities

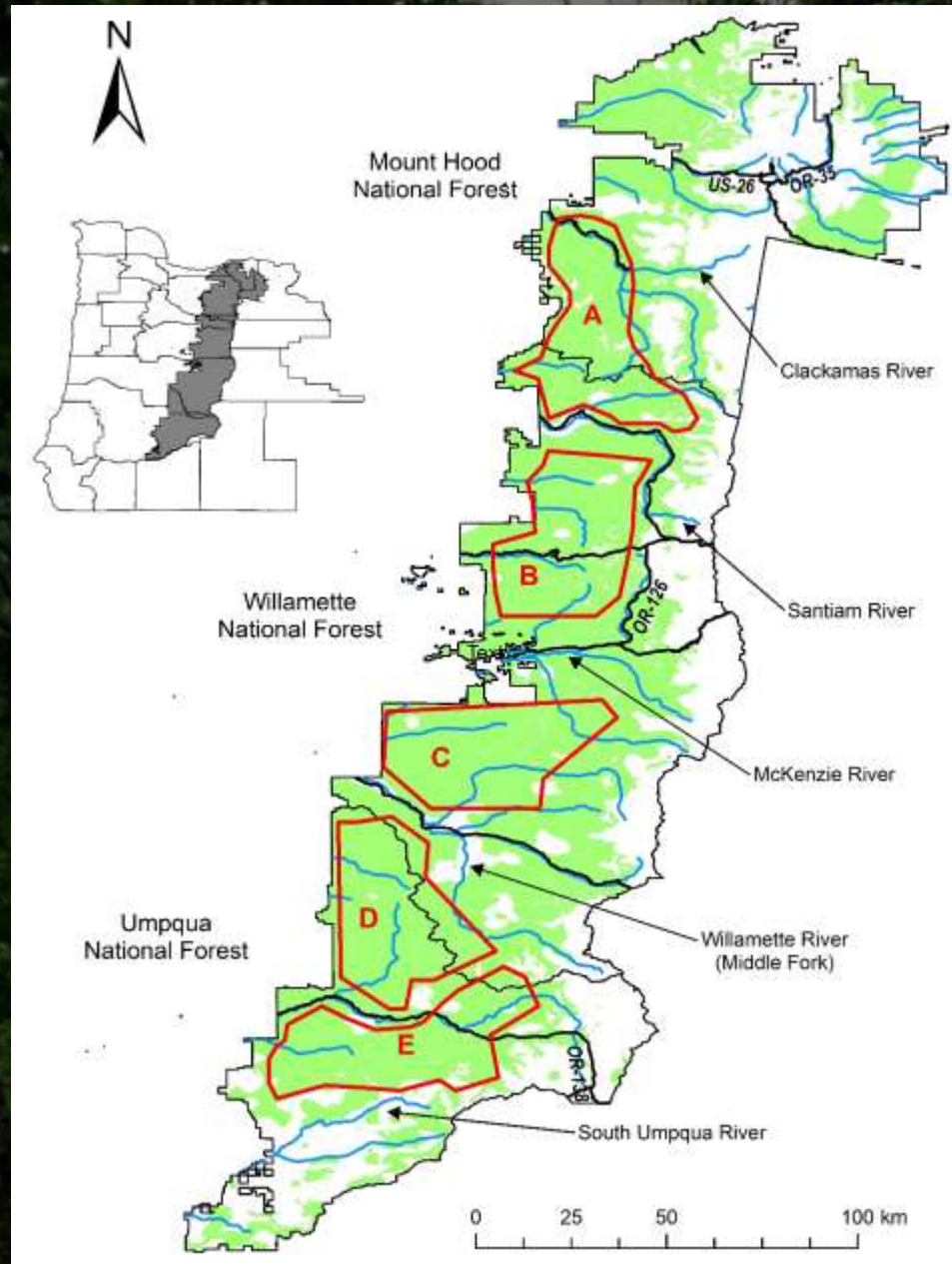
- Monitoring
- Research
- Connectivity
- Habitat features
- Enrollment in Conservation Programs

Fisher Range in Oregon

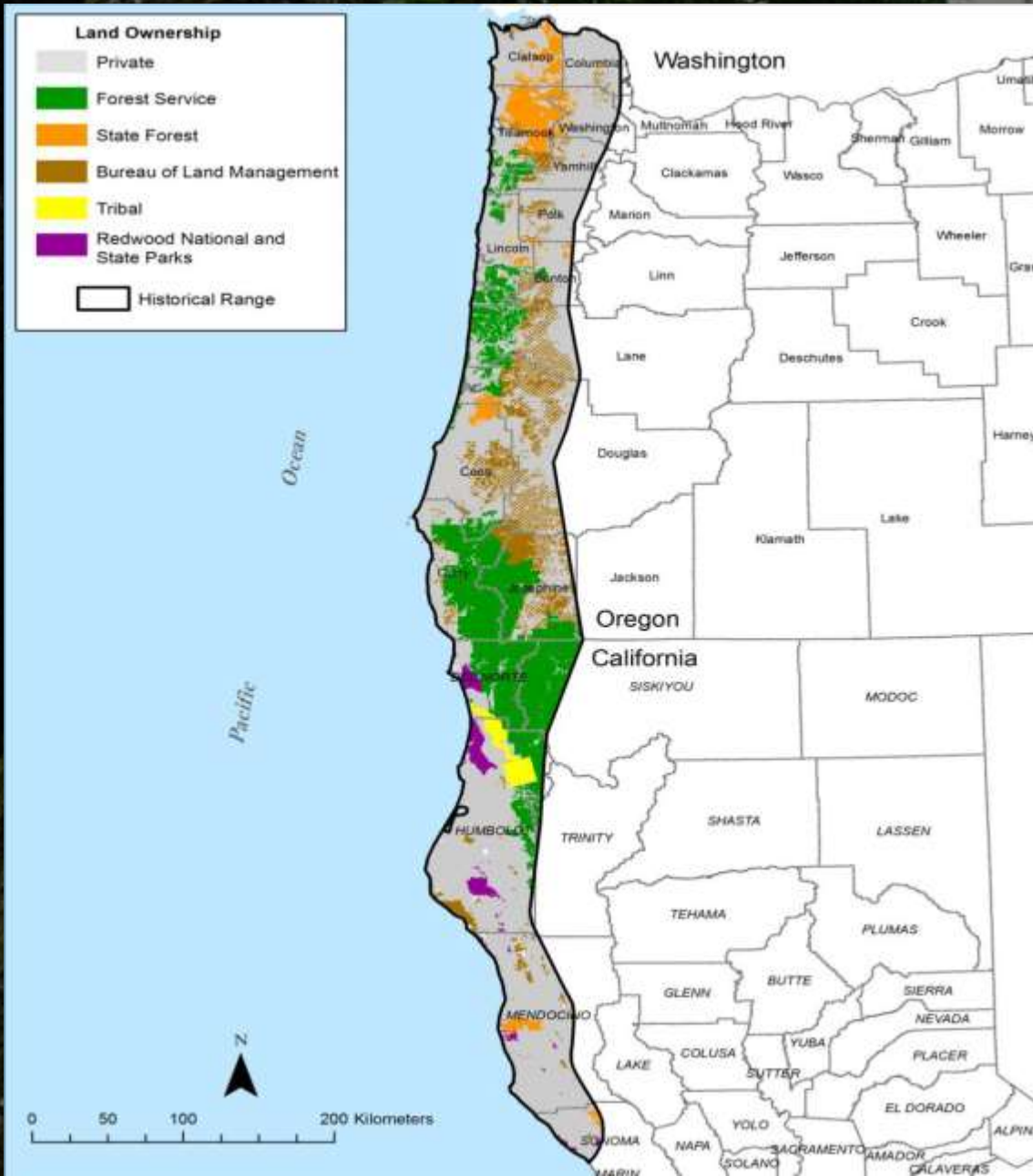


Potential Reintroduction

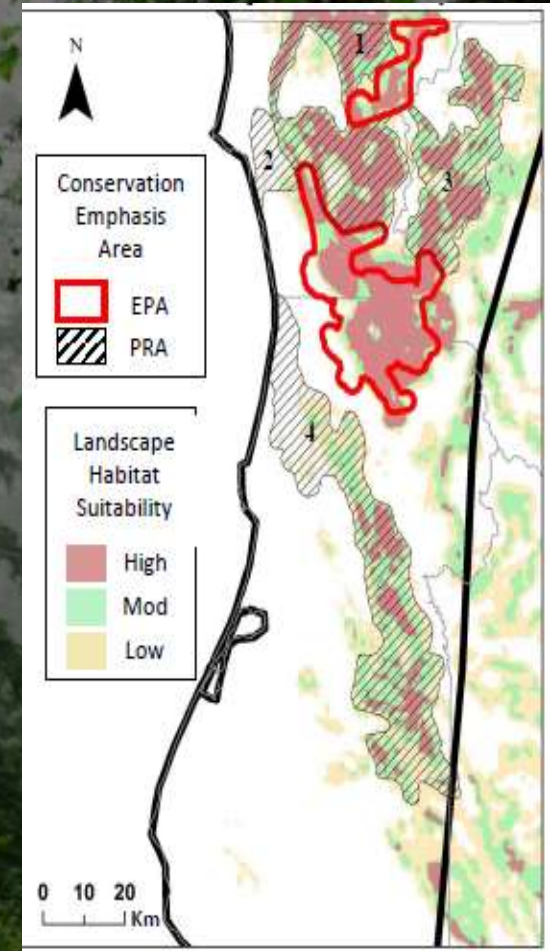
*More fisher in
more places*



Humboldt Marten Range



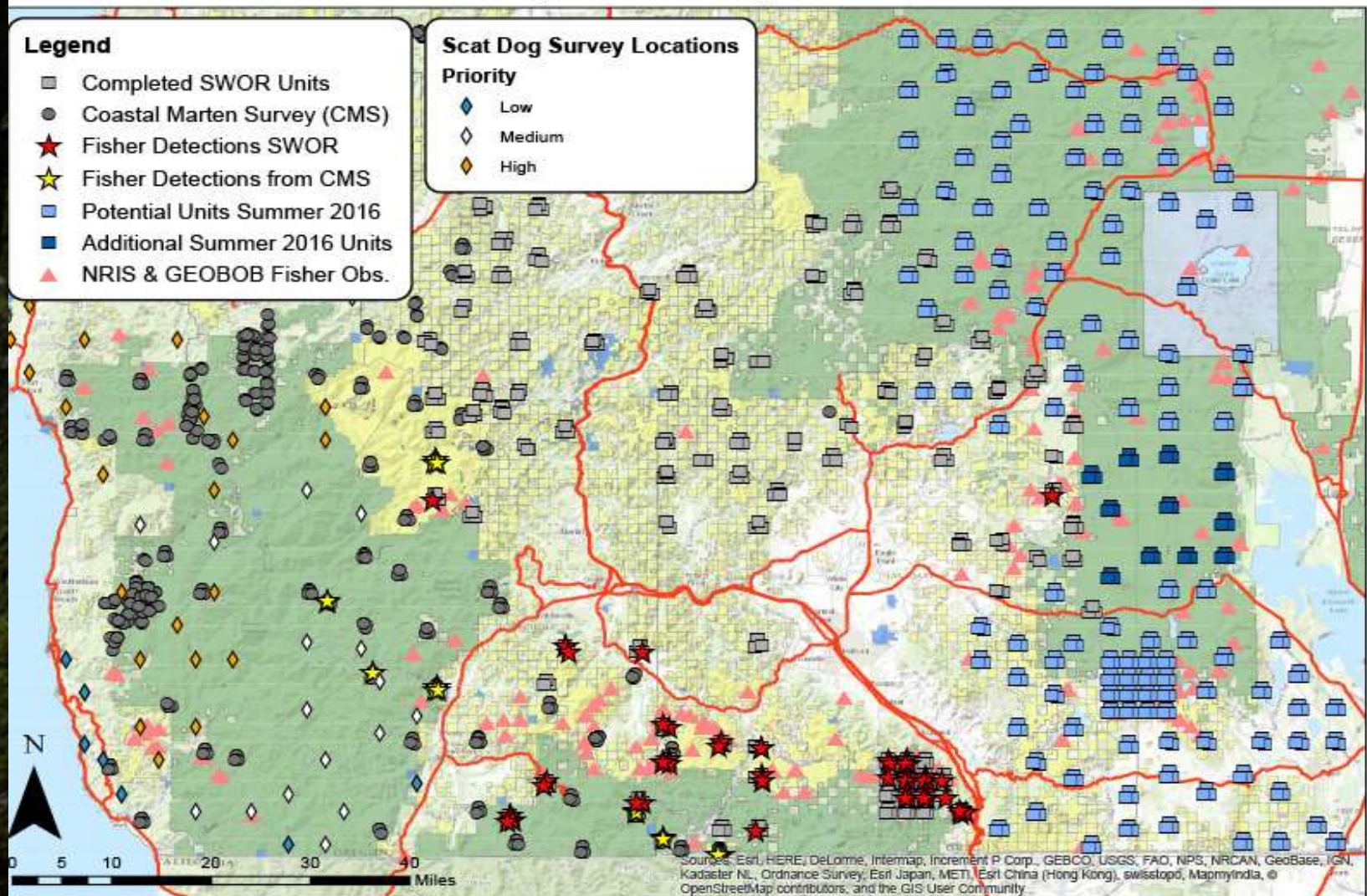
Connectivity



Slausen et al.

Collaborative Monitoring

Southwest Oregon Fisher Surveys 2015-2016





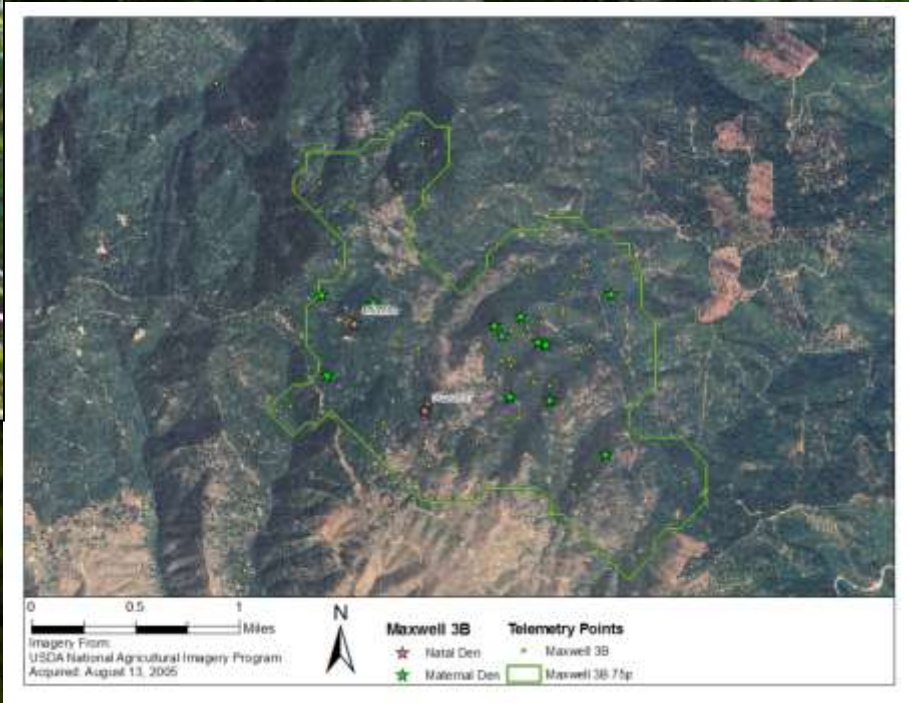
Complex



Simple



Habitat Features





If Species Listed:

- Safe Harbor Agreements
- Habitat Conservation Plan
- 4d rules

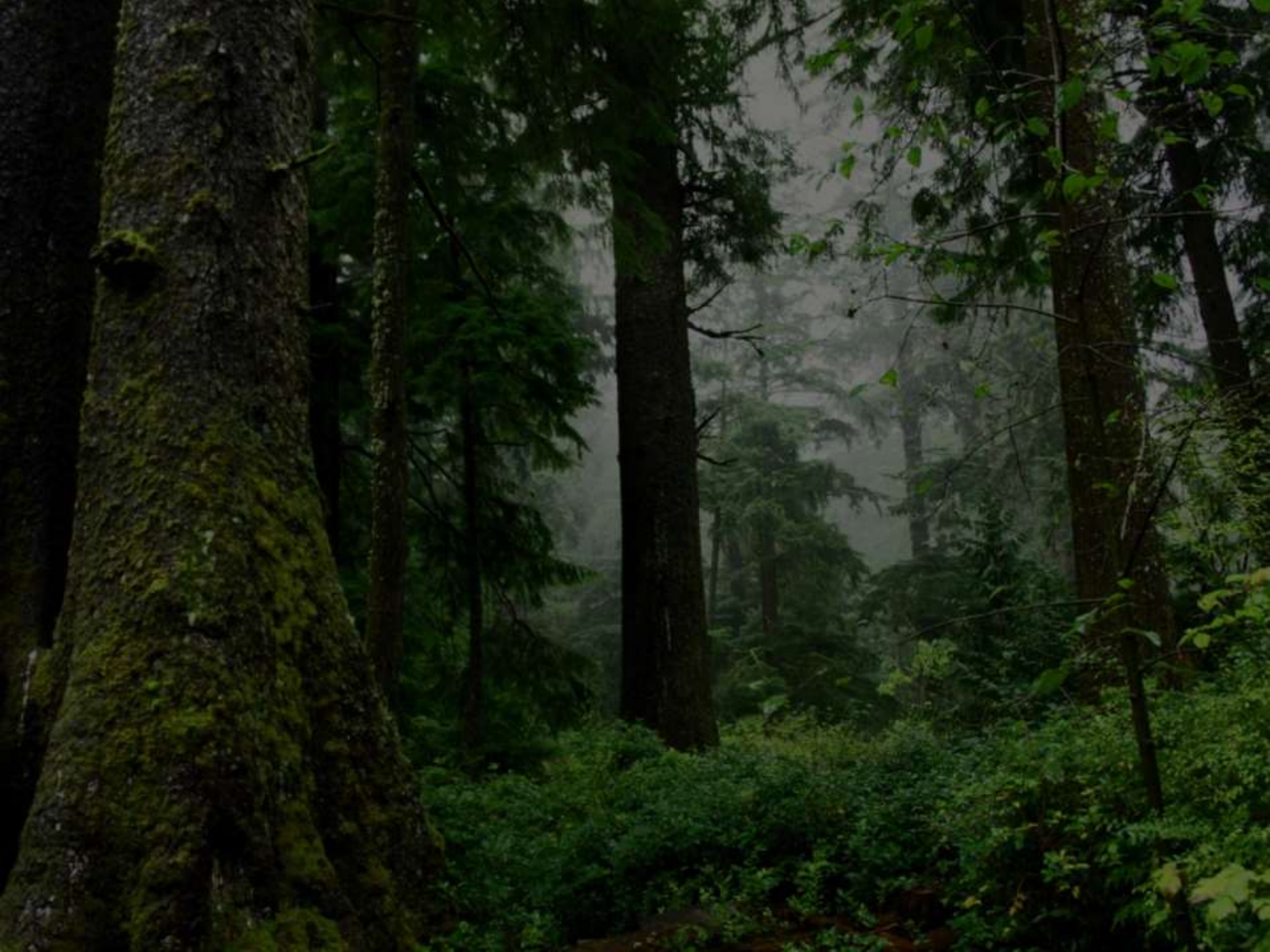


Summary:

- **Priorities: Field based collaboration and Jobs**
- **Federal lands “carry the water” for forest conservation**
- **But private lands can play important role**
- **Keep species *off* the ESA list**
- **Promote science-based active management to:**
 - **improve forest health**
 - **provide jobs**
 - **manage for key habitat features and habitat conditions**

Leopold Land Ethic: *“A thing is right when it tends to preserve the integrity, stability, and beauty of the biotic community. It is wrong when it tends otherwise.”*





2017-04-14 11:41:32 AM M 1/5





